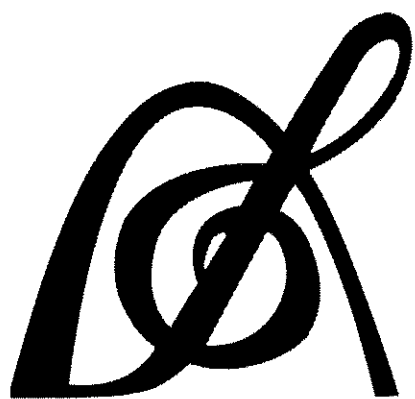


Set 3 (22-23)
Soprano Clarinet
Audition
Packet

St. Louis
All-Suburban/
Missouri All-State



PARKWAY WEST BANDS

MISSOURI BANDMASTERS ASSOCIATION

MISSOURI ALL-STATE BAND AUDITION MATERIALS

Bb SOPRANO CLARINET Sets II, III, IV

Scale: All scales are to be MEMORIZED.
 Prepare them all slurred and tongued in sixteenth notes at quarter note = 88.
 Scales should be performed ascending and descending. Scales given are the starting
 tone. DO NOT TRANSPOSE.

All scales are to be prepared from required scale sheet as written.

Chromatic: Perform the chromatic exactly as written.

Major Scales: C G D A E B/Cb F#/Gb C#/Db Ab Eb Bb F

Minor Scales: a e b f# c# g#/ab d#/eb a#/bb f c g d

Books: *Thirty-two Etudes for Clarinet – C. Rose/Carl Fischer Publication*

Klose Method for Clarinet – Simeon Bellison (revised)/Carl Fischer Publication

| | | | |
|----------------------|-------------------|----------------|----------------------------|
| Set I (2020-2021) | Thirty-Two Etudes | p. 20 p. 21 | #20 – first 8 lines all |
|----------------------|-------------------|----------------|----------------------------|

| | | |
|-------|----------------------------|-----------------------------------|
| Klose | p. 126 p. 128 p. 132 | Ab Major lines 5, 6, & 7 #9 |
|-------|----------------------------|-----------------------------------|

| | | | |
|-----------------------|-------------------|---------------|-----------------------------|
| Set II (2021-2022) | Thirty-two Etudes | p. 3 p. 23 | #2 – first 6 ½ lines #23 |
|-----------------------|-------------------|---------------|-----------------------------|

| | | |
|-------|----------------------------|---|
| Klose | p. 127 p. 128 p. 129 | E Major – line 5 lines 4, 8, 9, and bar 1 of 10 line 9, bar 2 thru line 10, bar 1 |
|-------|----------------------------|---|

| | | | |
|------------------------|-------------------|---------------|---------------------------|
| Set III (2022-2023) | Thirty-two Etudes | p. 6 p. 24 | #5 #24 – first 8 lines |
|------------------------|-------------------|---------------|---------------------------|

| | | |
|-------|----------------------------|--|
| Klose | p. 127 p. 128 p. 129 | A Major – line 7 line 10 last measure, line 11,12, & 13 line 10, bar 2 thru line 11, bar 1 |
|-------|----------------------------|--|

| | | | |
|-----------------------|-------------------|----------------|------------------------------|
| Set IV (2023-2024) | Thirty-two Etudes | p. 17 p. 26 | #17 #26 – first 6 ½ lines |
|-----------------------|-------------------|----------------|------------------------------|

| | | |
|-------|----------------------------|---|
| Klose | p. 127 p. 128 p. 129 | B Major – line 2, bar 3 thru line 3, bar 3 lines 1, 2, & 3 line 8, bar 2 thru line 9, bar 1 |
|-------|----------------------------|---|



MISSOURI ALL-STATE-BAND AUDITION SCALES

to be played at a minimum tempo of quarter note = 88

Bb Soprano Clarinet

Chromatic Scale

A musical score for a chromatic scale in Bb major, written for Bb Soprano Clarinet. It consists of three staves. The first staff shows the ascending scale from Bb4 to Bb5. The second staff shows the descending scale from Bb5 to Bb4. The third staff shows the ascending scale from Bb3 to Bb4.

Missouri ASB Major Scales

C Major Scale

Musical notation for the C Major Scale in 4/4 time, written for Bb Soprano Clarinet. The scale is presented in a single staff, ascending from C4 to C5.

G Major Scale

Musical notation for the G Major Scale in 4/4 time, written for Bb Soprano Clarinet. The scale is presented in a single staff, ascending from G4 to G5.

D Major Scale

Musical notation for the D Major Scale in 4/4 time, written for Bb Soprano Clarinet. The scale is presented in a single staff, ascending from D4 to D5.

A Major Scale

Musical notation for the A Major Scale in 4/4 time, written for Bb Soprano Clarinet. The scale is presented in a single staff, ascending from A4 to A5.

E Major Scale



B Major Scale



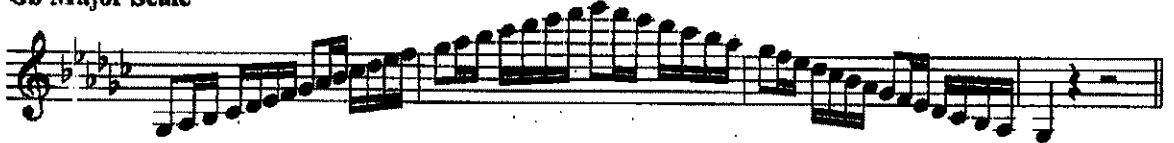
Cb Major Scale



F# Major Scale



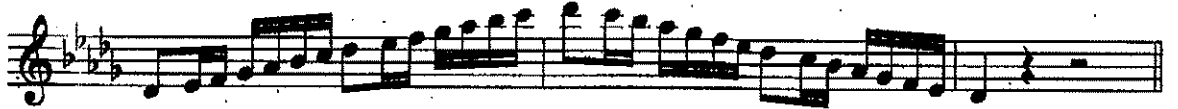
Gb Major Scale



C# Major Scale



Db Major Scale



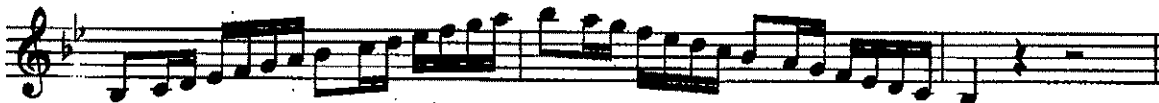
Ab Major Scale



E_b Major Scale



B_b Major Scale



F Major Scale



Missour ASB Melodic Minor Scales

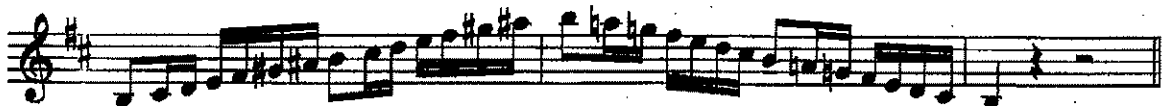
A Melodic Minor



E Melodic Minor



B Melodic Minor



F# Melodic Minor

Two staves of musical notation for the F# Melodic Minor scale. The first staff shows the ascending scale: F#4, G4, A4, B4, C#5, D5, E5, F#5. The second staff shows the descending scale: F#5, E5, D5, C#5, B4, A4, G4, F#4.

C# Melodic Minor

Two staves of musical notation for the C# Melodic Minor scale. The first staff shows the ascending scale: C#4, D4, E4, F#4, G#4, A4, B4, C#5. The second staff shows the descending scale: C#5, B4, A4, G#4, F#4, E4, D4, C#4.

G# Melodic Minor

Two staves of musical notation for the G# Melodic Minor scale. The first staff shows the ascending scale: G#4, A4, B4, C#5, D5, E5, F#5, G#5. The second staff shows the descending scale: G#5, F#5, E5, D5, C#5, B4, A4, G#4.

A^b Melodic Minor

Two staves of musical notation for the A^b Melodic Minor scale. The first staff shows the ascending scale: A^b4, B^b4, C^b5, D^b5, E^b5, F^b5, G^b5. The second staff shows the descending scale: G^b5, F^b5, E^b5, D^b5, C^b5, B^b4, A^b4.

D# Melodic Minor

Two staves of musical notation for the D# Melodic Minor scale. The first staff shows the ascending scale: D#4, E4, F#4, G#4, A4, B4, C#5, D#5. The second staff shows the descending scale: D#5, C#5, B4, A4, G#4, F#4, E4, D#4.

E^b Melodic Minor

Two staves of musical notation for the E^b Melodic Minor scale. The first staff shows the ascending scale: E^b4, F^b4, G^b4, A^b4, B^b4, C^b5, D^b5, E^b5. The second staff shows the descending scale: D^b5, C^b5, B^b4, A^b4, G^b4, F^b4, E^b4.

A# Melodic Minor



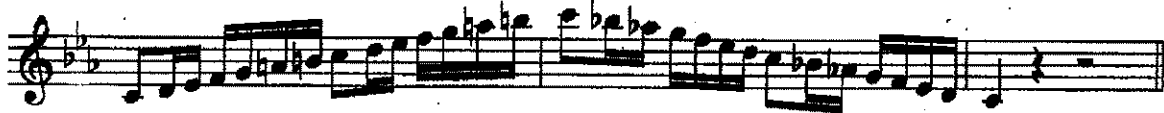
Bb Melodic Minor



F Melodic Minor



C Melodic Minor



G Melodic Minor



D Melodic Minor



Clarinet

5. *Adagio*

p con espress.

cresc. *f* *p*

pooco cresc.

f

f *dim.* *p* *f*

bien soutenu *p*

cresc. -

f *pooco dim.* *p* *dolce*

p *pp*

Clarinet

Allegro moderato

24.

The main musical score consists of eight staves of music. It begins with a treble clef, a key signature of two flats (B-flat and E-flat), and a 4/4 time signature. The tempo is marked 'Allegro moderato'. The music features a variety of rhythmic patterns, including eighth and sixteenth notes, often grouped with slurs. There are several dynamic markings, including accents and a 'p' (piano) marking. The piece concludes with a final note and a fermata.

This section shows a continuation of the musical score, consisting of two staves. The notation continues with complex rhythmic figures and slurs, maintaining the key signature and tempo. The piece ends with a final note and a fermata.

A Major

