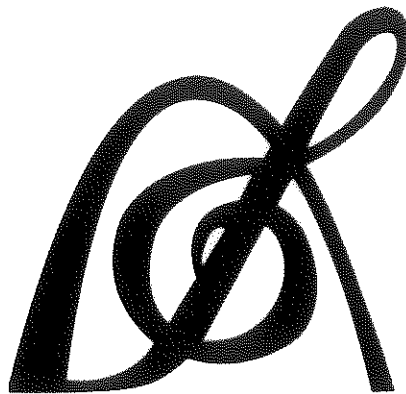


Set II
Euphonium TC
Audition
Packet

St. Louis
All-Suburban/
Missouri All-State



PARKWAY WEST BANDS

MISSOURI BANDMASTERS ASSOCIATION MISSOURI ALL-STATE BAND AUDITION MATERIALS

TREBLE CLEF BARITONE Sets I, II, III, IV

Scales: All scales are to be MEMORIZED.

Prepare them all slurred and all tongued in sixteenth notes at quarter note = 88
Scales should be performed ascending and descending. Scales given are the starting tone. Do not transpose.

ALL scales are to be prepared from required scale sheet as written.

Chromatic: full range of the instrument
Major Scales: C G D A E F Bb Eb Ab
Melodic Minor Scales: a e b f# c# d g c f

*Books: Arban Complete Conservatory Method for Trumpet, #021 – Goldman (edited)/
Carl Fischer Publication*

| | | | |
|----------------------|-------|----------|------------------------------------|
| Set I (2016-2017) | Arban | p. 22 | #48 |
| | | p. 46-47 | #28 – all |
| | | p. 125 | #1 – lines 5, 11, & 13 (E, Bb, C) |
| | | p. 190 | #142 |
| | | p. 290 | #6 – first 7 lines (to key change) |
| | | p. 320 | #6 – first 6 lines |

| | | | |
|-----------------------|-------|--------|-----------------------------------|
| Set II (2017-2018) | Arban | p. 22 | #49 |
| | | p. 33 | #31 |
| | | p. 56 | #69 – lines 2, 10, & 12 (F, A, G) |
| | | p. 189 | #139 |
| | | p. 293 | #9 – first 5 lines |
| | | p. 328 | Andante Moderato – first 6 lines |

| | | | |
|------------------------|-------|--------|---------------------------------|
| Set III (2018-2019) | Arban | p. 22 | #50 |
| | | p. 47 | #29 – all |
| | | p. 125 | #1 – lines 3, 8, & 12 (D, G, B) |
| | | p. 190 | #143 |
| | | p. 301 | #1 – lines 9, 10, 11, & 12 |
| | | p. 309 | #3 – first 11 lines |

| | | | |
|-----------------------|-------|--------|------------------------------------|
| Set IV (2019-2020) | Arban | p. 21 | #47 |
| | | p. 24 | #9 |
| | | p. 56 | #69 – lines 3, 9, & 11 (Bb, E, D) |
| | | p. 189 | #138 |
| | | p. 285 | #1 – first 7 lines (to key change) |
| | | p. 313 | #4 – lines 6, 7, & 8 |



MISSOURI ALL-STATE-BAND AUDITION SCALES

to be played at a minimum tempo of quarter note = 88

Trumpet/TC Baritone

Chromatic Scale

C Major

a melodic minor

F Major

d melodic minor

Bb Major

g melodic minor

Eb Major

c melodic minor

Trumpet/T.C. Baritone continued

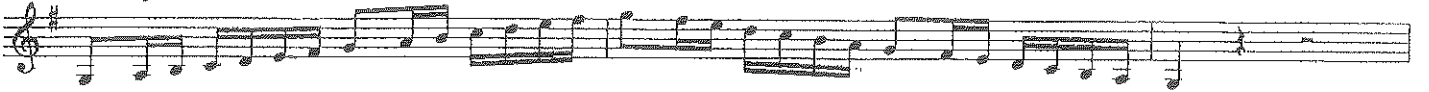
Ab Major



f melodic minor



G Major



e melodic minor



D Major



b melodic minor



A Major



^ melodic minor



E Major



c# melodic minor



49

3

b₄ 1

1 1 b₄

b₄

1 1

#6 2

6 1 1

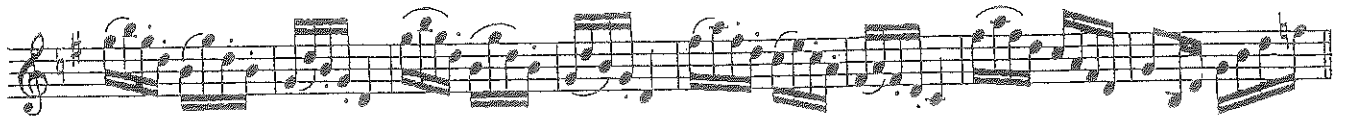
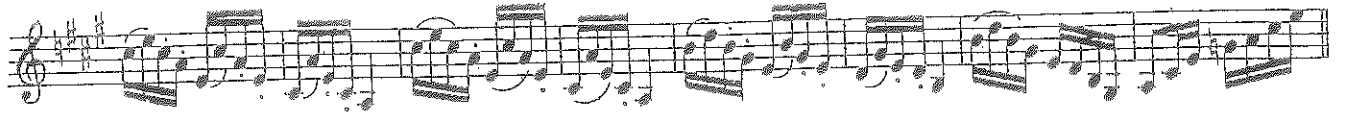
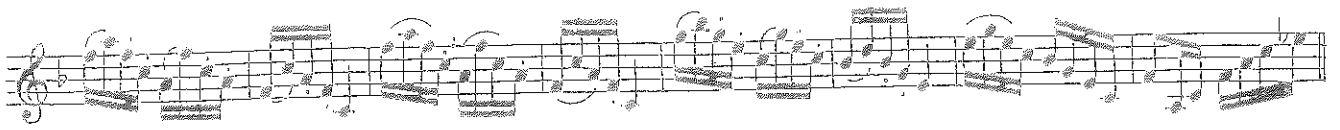
31. Allegretto. ♩. = 52 to 96

mf

mf

>

>



139. $\text{♩} = 112 - 124$
Tu tu ku tu tu tukutu tutuku tu tu tu ku tu tu tu ku

tu tu ku

tu tu tu ku tu

Allegro. $\text{♩} = 124$

9

f

mp

328

Cornet in Bb

Andante moderato $\text{♩} = 92$

p

a tempo

rall.

p

7