

Set I (2020 only)
Euphonium TC
Audition
Packet

St. Louis
All-Suburban/
Missouri All-State



PARKWAY WEST BANDS

MISSOURI BANDMASTERS ASSOCIATION MISSOURI ALL-STATE BAND AUDITION MATERIALS

TREBLE CLEF BARITONE Set I

Scale: All scales are to be MEMORIZED.
Prepare them all slurred and tongued in sixteenth notes at quarter note = 88.
Scales should be performed ascending and descending. Scales given are the starting tone. DO NOT TRANSPOSE.

All scales are to be prepared from required scale sheet as written.

Chromatic: Perform the chromatic exactly as written.

Major Scales: C G D A E Ab Eb Bb F

Minor Scales: a e b f# c# f c g d

Books: *Arban Complete Conservatory Method for Trumpet, #021 – Goldman (edited)/
Carl Fischer Publication*

For set I only (2020-2021), we will use only 9 major and 9 melodic minor scales. All 12 major scales will begin with set II (2021-2022).

Set I	Arban	p. 22	#48
(2020-21)		p. 46-47	#28 – all
		p. 125	#1 – lines 5, 11, & 13 (E, Bb, C)
		p. 190	#142
		p. 290	#6 – first 7 lines (to key change)
		p. 320	#6 – first 6 lines



MISSOURI ALL-STATE-BAND AUDITION SCALES

to be played at a minimum tempo of quarter note = 88

Treble Clef Baritone

Chromatic Scale

The chromatic scale is presented in two staves of music. The first staff shows the ascending scale from C4 to C5, and the second staff shows the descending scale from C5 to C4. The notes are written as quarter notes, and the key signature is one sharp (F#).

Missouri ASB Major Scales

C Major Scale

The C Major scale is written on a single staff in treble clef. It consists of eight measures: four measures for the ascending scale and four for the descending scale, ending with a whole rest.

G Major Scale

The G Major scale is written on a single staff in treble clef with one sharp (F#). It consists of eight measures: four for the ascending scale and four for the descending scale, ending with a whole rest.

D Major Scale

The D Major scale is written on a single staff in treble clef with two sharps (F# and C#). It consists of eight measures: four for the ascending scale and four for the descending scale, ending with a whole rest.

A Major Scale

The A Major scale is written on a single staff in treble clef with three sharps (F#, C#, and G#). It consists of eight measures: four for the ascending scale and four for the descending scale, ending with a whole rest.

E Major Scale

The E Major scale is written on a single staff in treble clef with four sharps (F#, C#, G#, and D#). It consists of eight measures: four for the ascending scale and four for the descending scale, ending with a whole rest.

F Major Scale**Bb Major Scale**

Eb Major Scale



Ab Major Scale



Missouri ASB Melodic Minor Scales

A Melodic Minor



E Melodic Minor



B Melodic Minor



F# Melodic Minor



C# Melodic Minor



F Melodic Minor**C Melodic Minor****G Melodic Minor****D Melodic Minor**

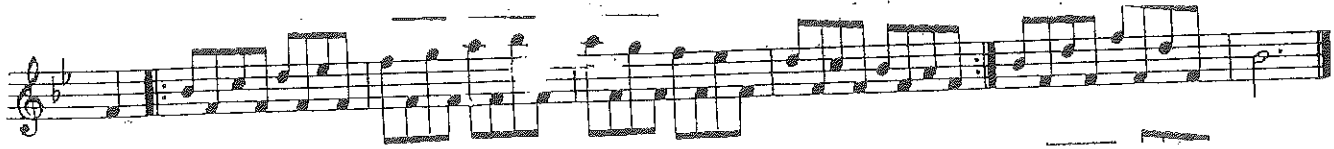
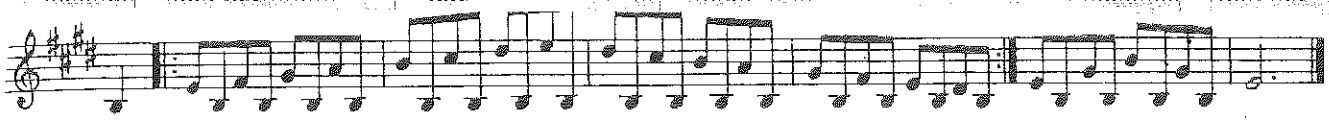
48.

A musical score consisting of six staves of music. The first staff is labeled '48.' and begins with a treble clef and a common time signature (C). The music is written in a single melodic line with eighth and sixteenth notes, some beamed together. The subsequent five staves continue the same melodic line, showing a steady progression of notes across the staves.

28.

A musical score consisting of three staves of music. The first staff is labeled '28.' and begins with a treble clef and a 3/8 time signature. The tempo is marked as '♩ = 96'. The music features a complex rhythmic pattern with many triplets, indicated by a '3' over the notes. The notes are beamed together in groups of three. The second and third staves continue this pattern, with some notes marked with accents (>). The bottom of the third staff shows some fingering or technical markings, including '2 3', '0 2', '2 0 2', '1 3', and '0'.

A musical score consisting of two staves of music. The music continues the complex rhythmic pattern of triplets from the previous section. The notes are beamed together in groups of three. The bottom of the second staff shows some fingering or technical markings, including '2 3', '0 2', '2 0 2', '1 3', and '0'. The music ends with a double bar line.



* Refer to p. 123

142. $\text{♩} = 96$
Tu tukutu ku tu

A musical staff in treble clef with a key signature of one flat (Bb) and a 6/8 time signature. It contains a sequence of eighth notes, some beamed together, and a final quarter note.
A musical staff in treble clef with a key signature of one flat (Bb) and a 6/8 time signature. It contains a sequence of eighth notes, some beamed together, and a final quarter note.
A musical staff in treble clef with a key signature of one flat (Bb) and a 6/8 time signature. It contains a sequence of eighth notes, some beamed together, and a final quarter note.

Moderato. $\text{♩} = 76$

6. *mf*

p

pp

Cornet in B \flat

Cavatina and Variations

Revised by
Edwin Franko Goldman

J. B. Arban

Andante
Piano

p *ff* *p*

f

7

lento