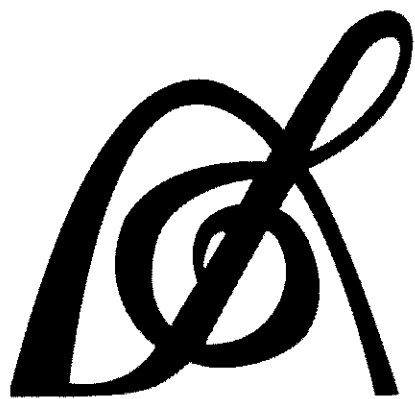


Set 3 (22-23)
Euphonium BC
Audition
Packet

St. Louis
All-Suburban/
Missouri All-State



PARKWAY WEST BANDS

MISSOURI BANDMASTERS ASSOCIATION

MISSOURI ALL-STATE BAND AUDITION MATERIALS

BASS CLEF BARITONE

Sets II, III, IV

Scale: All scales are to be MEMORIZED.

Prepare them all slurred and tongued in sixteenth notes at quarter note = 88.
Scales should be performed ascending and descending. Scales given are the starting tone. DO NOT TRANSPOSE.

All scales are to be prepared from required scale sheet as written.

Chromatic: Perform the chromatic exactly as written.

Major Scales: C G D A E B/C^b F[#]/G^b C[#]/D^b Ab Eb Bb F

Minor Scales: a e b f[#] c[#] g[#]/a^b d[#]/e^b a[#]/b^b f c g d

Books: *Arban Complete Conservatory Method for Trombone, #023 – Mantia (edited)/
Carl Fischer Publication*

Set I (2020-21)	Arban	p. 29	#48
		p. 52	#28
		p. 126	#1 – lines 1, 5, & 11 (Bb, D, Ab)
		p. 202	#142
		p. 211	#6 – first 7 lines (to key change)
		p. 252	#10 – first 5 lines
<hr/>			
Set II (2021-22)	Arban	p. 29	#49
		p. 40	#31
		p. 61	#69 – lines 2, 10, & 12 (Eb, G, F)
		p. 201	#139
		p. 215	#9 – first 6 lines
		p. 244	#7 – lines 8, 9, 10, 11, & 12
<hr/>			
Set III (2022-23)	Arban	p. 29	#50
		p. 52	#29
		p. 126	#1 – lines 3, 8, & 12 (C, F, A)
		p. 202	#143
		p. 231	#3 – first 8 lines
		p. 225	#1 – lines 8, 9, & 10 (observe repeat)
<hr/>			
Set IV (2023-24)	Arban	p. 28	#47
		p. 31	#9
		p. 61	#69 – lines 3, 9, & 11 (Ab,D,C)
		p. 201	#138
		p. 204	#1 – first 8 lines (to key change)
		p. 236	#5 – lines 5, 6, 7, & 8



MISSOURI ALL-STATE-BAND AUDITION SCALES

to be played at a minimum tempo of quarter note = 88

Euphonium
Bass Clef

Chromatic Scale

Musical notation for a chromatic scale in bass clef, 4/4 time. The scale consists of two lines of music. The first line shows the ascending chromatic scale from C2 to B4. The second line shows the descending chromatic scale from B4 to C2. Each note is marked with its corresponding sharp or flat sign.

Missouri ASB Major Scales

C Major Scale

Musical notation for the C Major scale in bass clef, 4/4 time. The scale is written on a single line of music, starting on C2 and ascending to C5.

G Major Scale

Musical notation for the G Major scale in bass clef, 4/4 time. The scale is written on a single line of music, starting on G2 and ascending to G5. The key signature has one sharp (F#).

D Major Scale

Musical notation for the D Major scale in bass clef, 4/4 time. The scale is written on a single line of music, starting on D2 and ascending to D5. The key signature has two sharps (F# and C#).

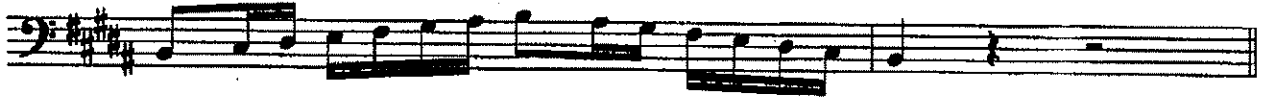
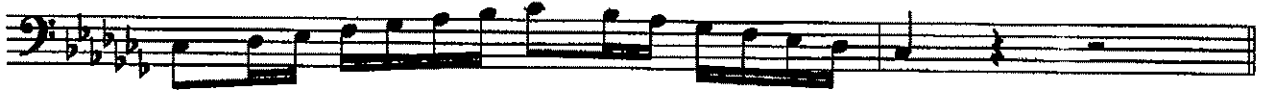
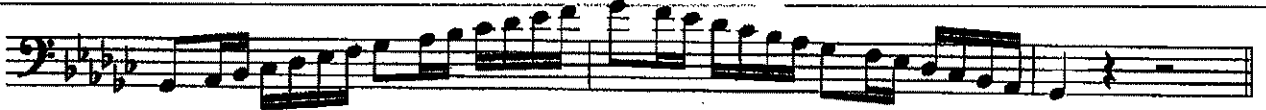
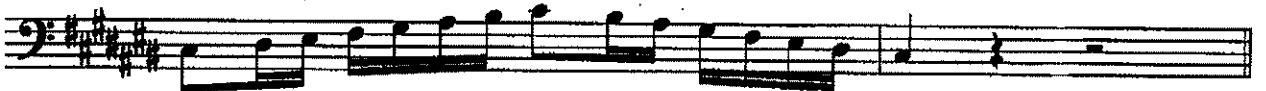
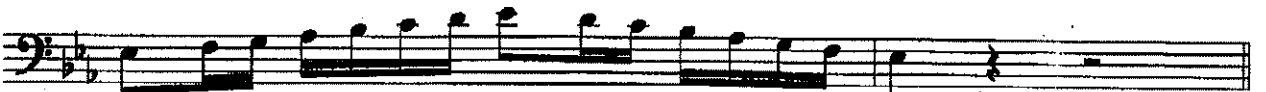
A Major Scale

Musical notation for the A Major scale in bass clef, 4/4 time. The scale is written on a single line of music, starting on A2 and ascending to A5. The key signature has three sharps (F#, C#, and G#).

E Major Scale

Musical notation for the E Major scale in bass clef, 4/4 time. The scale is written on a single line of music, starting on E2 and ascending to E5. The key signature has four sharps (F#, C#, G#, and D#).

MISSOURI ALL-STATE-BAND AUDITION SCALES

B Major Scale**Cb Major Scale****F# Major Scale****Gb Major Scale****C# Major Scale****Db Major Scale****Ab Major Scale****Eb Major Scale**

Bb Major Scale



F Major Scale



Missouri ASB Melodic Minor Scales

A Melodic Minor



E Melodic Minor



B Melodic Minor



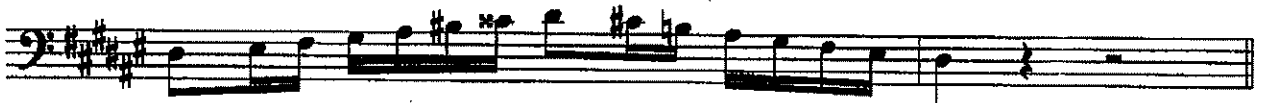
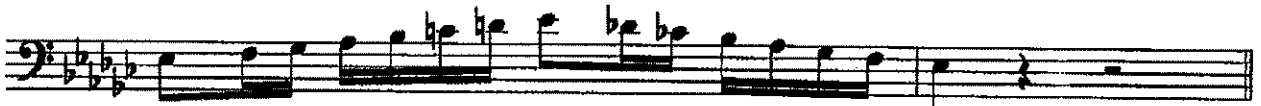
F# Melodic Minor



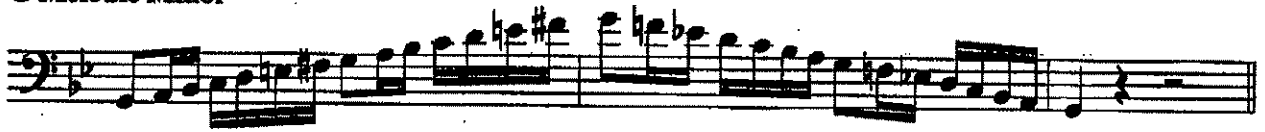
C# Melodic Minor



MISSOURI ALL-STATE-BAND AUDITION SCALES

G# Melodic Minor**Ab Melodic Minor****D# Melodic Minor****Eb Melodic Minor****A# Melodic Minor****Bb Melodic Minor****F Melodic Minor****C Melodic Minor**

G Melodic Minor



D Melodic Minor



50

7 6 #5 b4 6 b7 6 b4

1 b4 6 6 b4 6

6 b4 6 b4 b b 3 6

D.C.

27288-245

29

1 2 3 2 1 2 3 2 1 2 3 2 1 2 3 2

1 4 #5 4 1 4 #5 4 1 4 #5 4

#6 6 #6 #6 6 #6

1 4 b4 4 2 #2 2 1 4 b4 4

First musical staff in bass clef with a key signature of one flat. It contains a sequence of eighth notes with various fingering numbers: 6, b4, 6, b4, #5, 6, 6, 6.

Second musical staff in bass clef, continuing the sequence of eighth notes.

Third musical staff in bass clef with a key signature of two sharps. It contains a sequence of eighth notes with fingering numbers: #9, 8, 6, 8, #9.

tu ku tu ku tu

Fourth musical staff in bass clef with a key signature of one flat and a 6/8 time signature. It features a melodic line with eighth notes.

Fifth musical staff in bass clef with a key signature of one flat, featuring a rhythmic accompaniment of eighth notes.

Sixth musical staff in bass clef with a key signature of one flat, continuing the rhythmic accompaniment.

Brilliant Fantasy

Allegro maestoso

The main musical score consists of ten staves of music. It begins with a treble clef, a key signature of three flats (B-flat, E-flat, A-flat), and a common time signature (C). The music features a variety of rhythmic patterns, including eighth and sixteenth notes, often grouped with slurs and accents. Performance markings include *rall.* (rallentando), *a tempo*, *dolce* (softly), *cresc.* (crescendo), and *poco a poco* (gradually). Dynamic markings include *ff* (fortissimo) and *p* (piano). The score concludes with a double bar line and repeat dots.

THEME

The theme section consists of three staves of music. It is written in the same key signature and time signature as the main piece. The melody is characterized by a series of eighth and sixteenth notes, often with slurs and accents. The first staff begins with a treble clef and a common time signature. The section concludes with a double bar line and repeat dots.