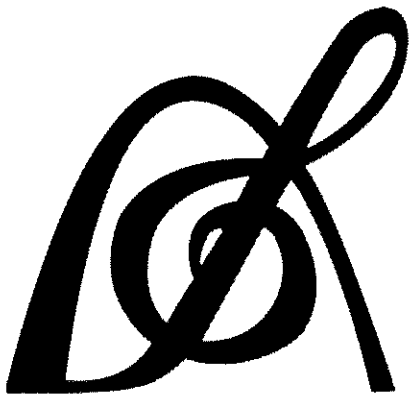


Set 3 (22-23)

**Bassoon
Audition
Packet**

*St. Louis
All-Suburban/
Missouri All-State*



PARKWAY WEST BANDS

MISSOURI BANDMASTERS ASSOCIATION

MISSOURI ALL-STATE BAND AUDITION MATERIALS

BASSOON Sets II, III, IV

Scale: All scales are to be MEMORIZED.
 Prepare them all slurred and tongued in sixteenth notes at quarter note = 88.
 Scales should be performed ascending and descending. Scales given are the starting tone. DO NOT TRANSPOSE.

All scales are to be prepared from required scale sheet as written.

Chromatic: Perform the chromatic exactly as written.

Major Scales: C G D A E B/Cb F#/Gb C#/Db Ab Eb Bb F

Minor Scales: a e b f# c# g#/ab d#/eb a#/bb f c g d

Books: Practical Method for Bassoon – Julius Weissenborn/Carl Fischer Publication

Set I Practical Method (2020-2021)	p. 35 p. 43 p. 69 p. 81 p. 86	Allegro – first 3 lines first 4 lines #5 #2 #12 – first page only
<hr/>		
Set II Practical Method (2021-2022)	p. 30 p. 40 p. 66 p. 82-83 p. 86	Allegro Moderato – lines 3, 4, 5, & 6 Poco Allegro – first 4 lines #2 #5 #11
<hr/>		
Set III Practical Method (2022-2023)	p. 41 p. 45 p. 62 p. 67 p. 81	Allegretto – lines 7, 8, 9, & 10 Allegro – lines 7, 8, 9, & 10 lines 1, 2, 3, & 4 #11 #1
<hr/>		
Set IV Practical Method (2023-2024)	p. 31 p. 37 p. 47 p. 67 p. 82	Andante – lines 8, 9, & 10 Andante – lines 2, 3, 4, 5, & 6 Marcia – lines 7, 8, 9, & 10 #10 #4



MISSOURI ALL-STATE-BAND AUDITION SCALES

to be played at a minimum tempo of quarter note = 88

Bassoon

Chromatic Scale

Chromatic Scale

Musical notation for the Bassoon chromatic scale. It consists of three staves of music in bass clef, 4/4 time. The first staff shows the ascending scale from C2 to C3. The second staff shows the descending scale from C3 to C2. The third staff shows the ascending scale from C3 to C4. The notes are written as quarter notes with stems, and accidentals are used to indicate the correct pitch for each chromatic step.

Missouri ASB Major Scales

C Major Scale

Musical notation for the C Major scale in bass clef, 4/4 time. The scale is written as a single line of music, ascending from C2 to C4 and then descending back to C2. The notes are quarter notes with stems.

G Major Scale

Musical notation for the G Major scale in bass clef, 4/4 time. The scale is written as a single line of music, ascending from G2 to G4 and then descending back to G2. The notes are quarter notes with stems.

D Major Scale

Musical notation for the D Major scale in bass clef, 4/4 time. The scale is written as a single line of music, ascending from D2 to D4 and then descending back to D2. The notes are quarter notes with stems.

A Major Scale

Musical notation for the A Major scale in bass clef, 4/4 time. The scale is written as a single line of music, ascending from A2 to A4 and then descending back to A2. The notes are quarter notes with stems.

E Major Scale



B Major Scale



Cb Major Scale



F# Major Scale



Gb major Scale



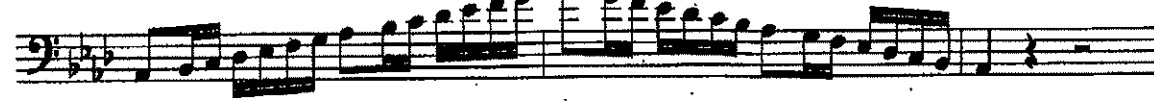
C# Major Scale



Db Major Scale



Ab Major Scale



E_b Major Scale



B_b Major Scale



F Major Scale



A Melodic Minor



Missouri ASB Melodic Minor Scales

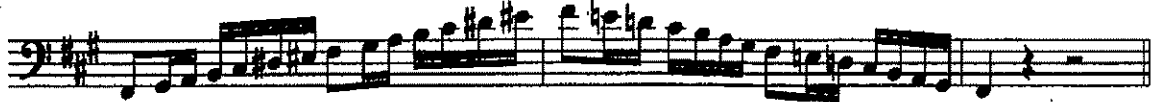
E Melodic Minor



B Melodic Minor



F# Melodic Minor



C# Melodic Minor



G# Melodic Minor



A^b Melodic Minor



D# Melodic Minor



E^b Melodic Minor



A# Melodic Minor



Bb Melodic Minor

Two staves of musical notation for the Bb Melodic Minor scale. The first staff shows the scale ascending from Bb2 to Bb5. The second staff shows the scale descending from Bb5 to Bb2. The key signature has two flats (Bb and Eb).

F Melodic Minor

Two staves of musical notation for the F Melodic Minor scale. The first staff shows the scale ascending from F2 to F5. The second staff shows the scale descending from F5 to F2. The key signature has one flat (Bb).

C Melodic Minor

Two staves of musical notation for the C Melodic Minor scale. The first staff shows the scale ascending from C2 to C5. The second staff shows the scale descending from C5 to C2. The key signature has no flats or sharps.

G Melodic Minor

Two staves of musical notation for the G Melodic Minor scale. The first staff shows the scale ascending from G2 to G5. The second staff shows the scale descending from G5 to G2. The key signature has one sharp (F#).

D Melodic Minor

Two staves of musical notation for the D Melodic Minor scale. The first staff shows the scale ascending from D2 to D5. The second staff shows the scale descending from D5 to D2. The key signature has two sharps (F# and C#).

Andante

dolce

f

1. 2.

Fine.

TRIO.

dolce

p

f

D.C. al Fine.

Allegro.

p

f

p

f

p

f

fz

p

f

sf

sf

XXVI.

The Long Grace Note (*appoggiatura*)
Andante sostenuto.

dolce, ma con espressione

poco f

f

p

mfz

dolce

11.

N416-121

SLVK

FIFTY ADVANCED STUDIES
(in all keys)

1/28/02 $\text{♩} = 76$

Allegro moderato.

Julius Weissenborn

CM, C: E, F II, A II, G7 D7

A G# A
 (use G, but change RH to 3rd fingering)