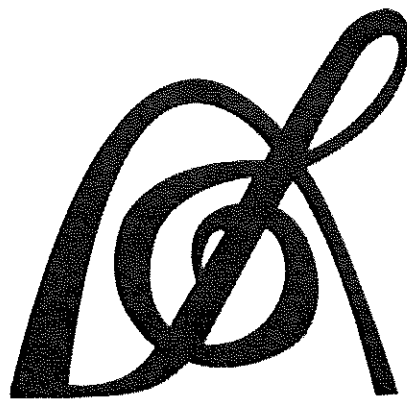


Set 4 (23-24)

**Bassoon
Audition
Packet**

*St. Louis
All-Suburban/
Missouri All-State*



PARKWAY WEST BANDS

MISSOURI BANDMASTERS ASSOCIATION

MISSOURI ALL-STATE BAND AUDITION MATERIALS

BASSOON Sets II, III, IV

Scale: All scales are to be MEMORIZED.
 Prepare them all slurred and tongued in sixteenth notes at quarter note = 88.
 Scales should be performed ascending and descending. Scales given are the starting tone. DO NOT TRANSPOSE.

All scales are to be prepared from required scale sheet as written.

Chromatic: Perform the chromatic exactly as written.

Major Scales: C G D A E B/Cb F#/Gb C#/Db Ab Eb Bb F

Minor Scales: a e b f# c# g#/ab d#/eb a#/bb f c g d

Books: Practical Method for Bassoon – Julius Weissenborn/Carl Fischer Publication

Set I Practical Method (2020-2021)	p. 35 p. 43 p. 69 p. 81 p. 86	Allegro – first 3 lines first 4 lines #5 #2 #12 – first page only
---------------------------------------	---	---

Set II Practical Method (2021-2022)	p. 30 p. 40 p. 66 p. 82-83 p. 86	Allegro Moderato – lines 3, 4, 5, & 6 Poco Allegro – first 4 lines #2 #5 #11
--	--	--

Set III Practical Method (2022-2023)	p. 41 p. 45 p. 62 p. 67 p. 81	Allegretto – lines 7, 8, 9, & 10 Allegro – lines 7, 8, 9, & 10 lines 1, 2, 3, & 4 #11 #1
---	---	--

Set IV Practical Method (2023-2024)	p. 31 p. 37 p. 47 p. 67 p. 82	Andante – lines 8, 9, & 10 Andante – lines 2, 3, 4, 5, & 6 Marcia – lines 7, 8, 9, & 10 #10 #4
--	---	--



MISSOURI ALL-STATE-BAND AUDITION SCALES

to be played at a minimum tempo of quarter note = 88

Bassoon

Chromatic Scale

Chromatic Scale

The musical notation for the chromatic scale is presented on three staves. The first staff shows the ascending scale from C2 to C3. The second staff shows the descending scale from C3 to C2. The third staff shows the ascending scale from C3 to C4. The notes are written in a bass clef with a key signature of one sharp (F#) and a 4/4 time signature.

Missouri ASB Major Scales

C Major Scale

The C Major Scale is written on a single staff in a bass clef with a key signature of one sharp (F#) and a 4/4 time signature. The scale is presented as a single melodic line.

G Major Scale

The G Major Scale is written on a single staff in a bass clef with a key signature of two sharps (F# and C#) and a 4/4 time signature. The scale is presented as a single melodic line.

D Major Scale

The D Major Scale is written on a single staff in a bass clef with a key signature of two sharps (F# and C#) and a 4/4 time signature. The scale is presented as a single melodic line.

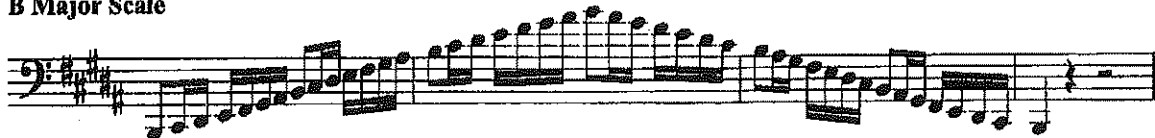
A Major Scale

The A Major Scale is written on a single staff in a bass clef with a key signature of three sharps (F#, C#, and G#) and a 4/4 time signature. The scale is presented as a single melodic line.

E Major Scale



B Major Scale



Cb Major Scale



F# Major Scale



Gb major Scale



C# Major Scale



Db Major Scale



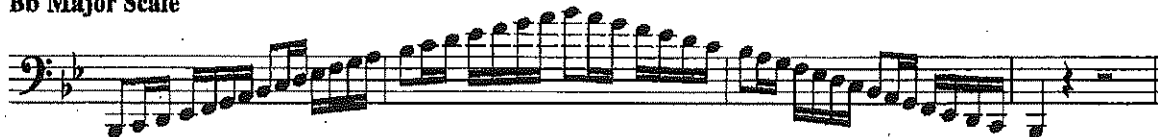
Ab Major Scale



E_b Major Scale



B_b Major Scale



F Major Scale



A Melodic Minor



Missouri ASB Melodic Minor Scales

E Melodic Minor



B Melodic Minor



F# Melodic Minor



C# Melodic Minor



G# Melodic Minor



A# Melodic Minor



D# Melodic Minor



E# Melodic Minor



A# Melodic Minor



Bb Melodic Minor

Two staves of musical notation for the Bb Melodic Minor scale. The first staff shows the ascending scale from Bb2 to Bb6. The second staff shows the descending scale from Bb6 to Bb2. The key signature has two flats (Bb and Eb).

F Melodic Minor

One staff of musical notation for the F Melodic Minor scale, showing the ascending scale from F2 to F6. The key signature has two flats (Bb and Eb).

C Melodic Minor

Two staves of musical notation for the C Melodic Minor scale. The first staff shows the ascending scale from C2 to C6. The second staff shows the descending scale from C6 to C2. The key signature has no flats or sharps.

G Melodic Minor

One staff of musical notation for the G Melodic Minor scale, showing the ascending scale from G2 to G6. The key signature has one flat (Bb).

D Melodic Minor

One staff of musical notation for the D Melodic Minor scale, showing the ascending scale from D2 to D6. The key signature has two sharps (F# and C#).

MISSOURI BANDMASTERS ASSOCIATION

MISSOURI ALL-STATE BAND AUDITION MATERIALS

Bb SOPRANO CLARINET Sets II, III, IV

Scale: All scales are to be MEMORIZED.
 Prepare them all slurred and tongued in sixteenth notes at quarter note = 88.
 Scales should be performed ascending and descending. Scales given are the starting
 tone. DO NOT TRANSPOSE.

All scales are to be prepared from required scale sheet as written.

Chromatic: Perform the chromatic exactly as written.

Major Scales: C G D A E B/Cb F#/Gb C#/Db Ab Eb Bb F

Minor Scales: a e b f# c# g#/ab d#/eb a#/bb f c g d

Books: *Thirty-two Etudes for Clarinet – C. Rose/Carl Fischer Publication*

Klose Method for Clarinet – Simeon Bellison (revised)/Carl Fischer Publication

Set I (2020-2021)	Thirty-Two Etudes	p. 20 p. 21	#20 – first 8 lines all
----------------------	-------------------	----------------	----------------------------

Klose	p. 126 p. 128 p. 132	Ab Major lines 5, 6, & 7 #9
-------	----------------------------	-----------------------------------

Set II (2021-2022)	Thirty-two Etudes	p. 3 p. 23	#2 – first 6 ½ lines #23
-----------------------	-------------------	---------------	-----------------------------

Klose	p. 127 p. 128 p. 129	E Major – line 5 lines 4, 8, 9, and bar 1 of 10 line 9, bar 2 thru line 10, bar 1
-------	----------------------------	---

Set III (2022-2023)	Thirty-two Etudes	p. 6 p. 24	#5 #24 – first 8 lines
------------------------	-------------------	---------------	---------------------------

Klose	p. 127 p. 128 p. 129	A Major – line 7 line 10 last measure, line 11,12, & 13 line 10, bar 2 thru line 11, bar 1
-------	----------------------------	--

Set IV (2023-2024)	Thirty-two Etudes	p. 17 p. 26	#17 #26 – first 6 ½ lines
-----------------------	-------------------	----------------	------------------------------

Klose	p. 127 p. 128 p. 129	B Major – line 2, bar 3 thru line 3, bar 3 lines 1, 2, & 3 line 8, bar 2 thru line 9, bar 1
-------	----------------------------	---

4/4
ok
Andante.
Minor

mf *p* *f* *mf* *p* *f*

Moderato assai.

p

With full tone

Andante.

mf *ritard.*

Marcia.
risoluto

poco forte *p dolce* *cresc.* *f* *sf* *sf*

10.

Musical score for exercise 10, consisting of two staves of music in bass clef with a key signature of one flat and a 3/4 time signature. The music features a continuous eighth-note pattern with various articulations and slurs.

Andante sostenuto.

Musical score for exercise 4, consisting of four staves of music in bass clef with a key signature of one flat and a 3/4 time signature. The music is marked "Andante sostenuto." and includes dynamic markings such as *p dolce*, *p*, *f*, and *mf*, along with articulations like "fespess." and "dimin.".