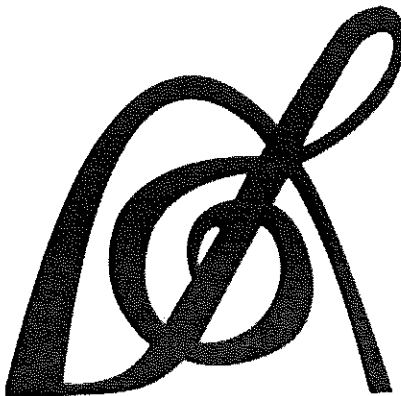


Set 4 (23-24)
Bass Clarinet
Audition
Packet

St. Louis
All-Suburban/
Missouri All-State



PARKWAY WEST BANDS

MISSOURI BANDMASTERS ASSOCIATION

MISSOURI ALL-STATE BAND AUDITION MATERIALS

Bb BASS CLARINET

Sets II, III, IV

Scale: All scales are to be MEMORIZED.
 Prepare them all slurred and tongued in sixteenth notes at quarter note = 88.
 Scales should be performed ascending and descending. Scales given are the
 starting tone. DO NOT TRANSPOSE.

All scales are to be prepared from required scale sheet as written.

Chromatic: Perform the chromatic exactly as written.

Major Scales: C G D A E B/Cb F#/Gb C#/Db Ab Eb Bb F

Minor Scales: a e b f# c# g#/ab d#/eb a#/bb f c g d

Books: *21 Foundation Studies for Alto and Bass Clarinet – Wm. Rhoads/Southern Pub.*
(Older edition of this book = page number different by minus 2)
Introducing the Alto or Bass Clarinet – Voxman/Rubank Publication

Set I (2020-21)	21 Foundation Studies	p. 29	#19
--------------------	-----------------------	-------	-----

Introducing	p. 14	#5
	p. 22	#3
	p. 24	#3
	p. 36	#5

Set II (2021-22)	21 Foundation Studies	p. 32	#21
---------------------	-----------------------	-------	-----

Introducing	p. 9	#4
	p. 17	#5
	p. 26-27	#5
	p. 37	#3

Set III (2022-23)	21 Foundation Studies	p. 21	#13
----------------------	-----------------------	-------	-----

Introducing	p. 11	#1
	p. 12	#5
	p. 15	#4
	p. 42	Pastorale

Set IV (2023-24)	21 Foundation Studies	p. 16	#9
---------------------	-----------------------	-------	----

Introducing	p. 13	#5
	p. 16	#5
	p. 20	#6
	p. 36	#2 slurred



MISSOURI ALL-STATE-BAND AUDITION SCALES

to be played at a minimum tempo of quarter note = 88

Bb Bass Clarinet

Chromatic Scale

The chromatic scale is written on three staves of music. The first staff is in 3/4 time and contains the first eight notes of the scale: C, C#, D, D#, E, E#, F, and F#. The second staff continues with the next eight notes: G, G#, A, A#, B, Bb, Ab, and Gb. The third staff concludes the scale with the final two notes: F and E, followed by a double bar line.

Missouri ASB Major Scales

C Major Scale

The C major scale is written on a single staff in 4/4 time. It consists of eight measures of music, each containing a pair of eighth notes. The notes are: C4, D4, E4, F4, G4, A4, B4, C5, B4, A4, G4, F4, E4, D4, C4.

G Major Scale

The G major scale is written on a single staff in 4/4 time. It consists of eight measures of music, each containing a pair of eighth notes. The notes are: G4, A4, B4, C5, B4, A4, G4, F4, E4, D4, C4, B3, A3, G3, F2.

D Major Scale

The D major scale is written on a single staff in 4/4 time. It consists of eight measures of music, each containing a pair of eighth notes. The notes are: D4, E4, F#4, G4, A4, B4, C#5, D5, C#5, B4, A4, G4, F#4, E4, D4.

A Major Scale



E Major Scale



B Major Scale



Cb Major Scale



F# Major Scale



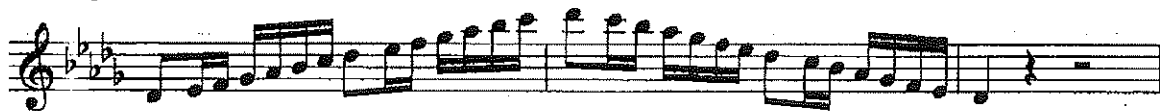
Gb Major



C# Major Scale



Db Major Scale



Ab Major Scale



Eb Major Scale



Bb Major Scale



F Major Scale



Missouri ASB Melodic Minor Scales

A Melodic Minor



E Melodic Minor



Allegro non troppo

p

cresc.

(9)

mf

dim.

p

cresc.

mf

(17)

cresc.

(25)

dim.

p

dim. rall.

