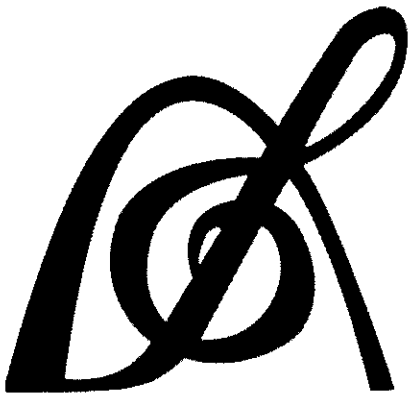


Set 3 (22-23)
Alto Saxophone
Audition
Packet

St. Louis
All-Suburban/
Missouri All-State



PARKWAY WEST BANDS

MISSOURI BANDMASTERS ASSOCIATION

MISSOURI ALL-STATE BAND AUDITION MATERIALS

ALTO SAXOPHONE Sets II, III, IV

Scale: All scales are to be MEMORIZED.
 Prepare them all slurred and tongued in sixteenth notes at quarter note = 88.
 Scales should be performed ascending and descending. Scales given are the starting tone. DO NOT TRANSPOSE.

All scales are to be prepared from required scale sheet as written.

Chromatic: Perform the chromatic exactly as written.

Major Scales: C G D A E B/Cb F#/Gb C#/Db Ab Eb Bb F

Minor Scales: a e b f# c# g#/ab d#/eb a#/bb f c g d

Books: *Selected Studies for Saxophone – Voxman/Rubank Publication*
 Universal-Prescott, 1st and 2nd Year – Carl Fischer Publication

Set I (2020-21)	Selected Studies	p. 3	all
		p. 6	all
	Universal-Prescott	p. 42	#78
		p. 208	#3
		p. 208	#5
		p. 212	#3
	p. 214	lines 1, 2, & 3	

Set II (2021-22)	Selected Studies	p. 9	all
		p. 29	all
	Universal-Prescott	p. 42	#79
		p. 209	#8
		p. 209	#10
		p. 212	#4
	p. 214	last 3 lines	

Set III (2022-23)	Selected Studies	p. 5	Mod. Assai
		p. 7	all
	Universal-Prescott	p. 44	#88
		p. 210	#16
		p. 210	#17
		p. 213	#11
	p. 214	lines 7, 8, 9, & 10	

Set IV (2023-24)	Selected Studies	p. 8	Andante
		p. 15	Vivace
	Universal-Prescott	p. 44	#86
		p. 210	#15
		p. 210	#18
		p. 212	#6
	p. 214	lines 4, 5, & 6	



MISSOURI ALL-STATE-BAND AUDITION SCALES

to be played at a minimum tempo of quarter note = 88

Saxophones

Chromatic Scale

The chromatic scale is presented in two staves of music. The first staff shows the ascending scale from C4 to C5, and the second staff shows the descending scale from C5 to C4. Each note is marked with its appropriate sharp or flat sign.

Missouri ASB Major Scales

C Major Scale

The C Major Scale is written on a single staff in treble clef, showing the ascending and descending sequences of notes.

G Major Scale

The G Major Scale is written on a single staff in treble clef, starting with a one-sharp key signature (F#) and showing the ascending and descending sequences of notes.

D Major Scale

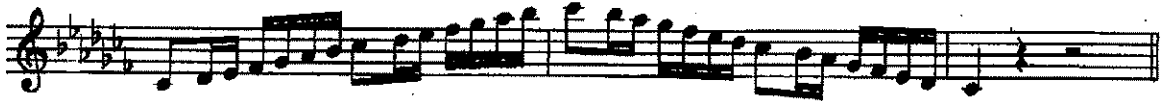
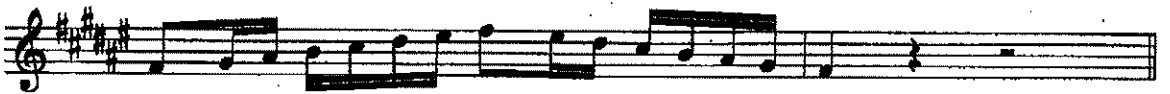
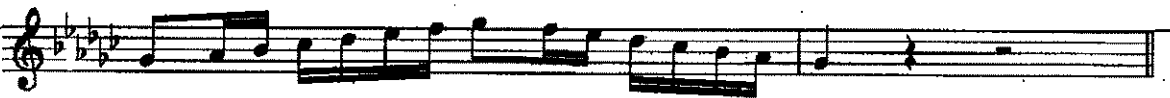
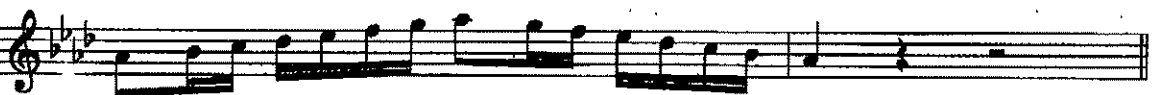
The D Major Scale is written on a single staff in treble clef, starting with a two-sharp key signature (F#, C#) and showing the ascending and descending sequences of notes.

A Major Scale

The A Major Scale is written on a single staff in treble clef, starting with a three-sharp key signature (F#, C#, G#) and showing the ascending and descending sequences of notes.

E Major Scale

The E Major Scale is written on a single staff in treble clef, starting with a four-sharp key signature (F#, C#, G#, D#) and showing the ascending and descending sequences of notes.

B Major Scale**Cb Major Scale****F# Major Scale****Gb major Scale****C# Major Scale****Db Major Scale****Ab Major Scale****Eb Major Scale**

Bb Major Scale



F Major Scale



Missouri ASB Melodic Minor Scales

A Melodic Minor



E Melodic Minor



B Melodic Minor



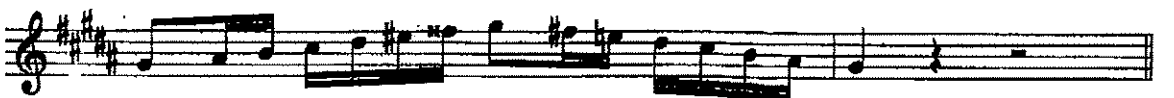
F# Melodic Minor



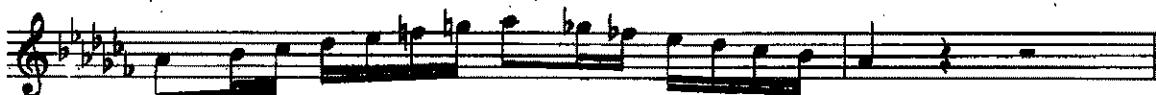
C# Melodic Minor



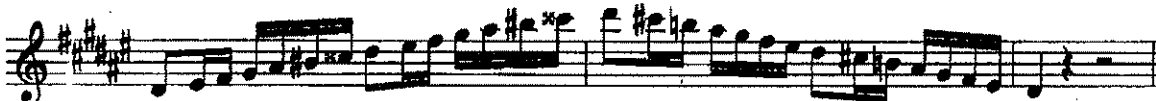
G# Melodic Minor



Ab Melodic Minor



D# Melodic Minor



Eb Melodic Minor



A# Melodic Minor



Bb Melodic Minor



F Melodic Minor



C Melodic Minor



G Melodic Minor



D Melodic Minor



ALTO

Moderato assai (in 4)

MÜLLER

p

pp

pp

resu.

f

p

Stop

(1) *tr*

(1) *tr*

Allegro

HEINZE

f

ff

1

6

88. *Count: 1, 2, 1, 2.*

E minor.

No 16.

D major.

No 17.

E major.

No 11.

C# minor.

Exercise on different Diminished Sevenths.