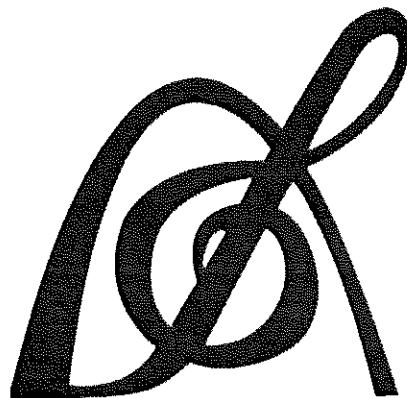


**Set 4 (23-24)**  
**Alto Saxophone**  
**Audition**  
**Packet**

*St. Louis*  
*All-Suburban/*  
*Missouri All-State*



**PARKWAY WEST BANDS**

# MISSOURI BANDMASTERS ASSOCIATION

## MISSOURI ALL-STATE BAND AUDITION MATERIALS

ALTO SAXOPHONE      Sets II, III, IV

Scale: All scales are to be MEMORIZED.  
 Prepare them all slurred and tongued in sixteenth notes at quarter note = 88.  
 Scales should be performed ascending and descending. Scales given are the starting tone. DO NOT TRANSPOSE.

All scales are to be prepared from required scale sheet as written.

Chromatic: Perform the chromatic exactly as written.

Major Scales: C G D A E B/Cb F#/Gb C#/Db Ab Eb Bb F

Minor Scales: a e b f# c# g#/ab d#/eb a#/bb f c g d

Books:      *Selected Studies for Saxophone – Voxman/Rubank Publication*  
                  *Universal-Prescott, 1<sup>st</sup> and 2<sup>nd</sup> Year – Carl Fischer Publication*

Set I (2020-21)	Selected Studies	p. 3	all
		p. 6	all
	Universal-Prescott	p. 42	#78
		p. 208	#3
		p. 208	#5
		p. 212	#3
		p. 214	lines 1, 2, & 3

Set II (2021-22)	Selected Studies	p. 9	all
		p. 29	all
	Universal-Prescott	p. 42	#79
		p. 209	#8
		p. 209	#10
		p. 212	#4
		p. 214	last 3 lines

Set III (2022-23)	Selected Studies	p. 5	Mod. Assai
		p. 7	all
	Universal-Prescott	p. 44	#88
		p. 210	#16
		p. 210	#17
		p. 213	#11
		p. 214	lines 7, 8, 9, & 10

Set IV (2023-24)	Selected Studies	p. 8	Andante
		p. 15	Vivace
	Universal-Prescott	p. 44	#86
		p. 210	#15
		p. 210	#18
		p. 212	#6
		p. 214	lines 4, 5, & 6



# MISSOURI ALL-STATE-BAND AUDITION SCALES

to be played at a minimum tempo of quarter note = 88

Saxophones

## Chromatic Scale

Two staves of musical notation for a chromatic scale. The first staff shows the ascending scale from C4 to C5. The second staff shows the descending scale from C5 to C4. The notes are: C, C#, D, D#, E, E#, F, F#, G, G#, A, A#, B, B#, C.

## Missouri ASB Major Scales

### C Major Scale

Single staff of musical notation for the C Major Scale, ascending and descending.

### G Major Scale

Single staff of musical notation for the G Major Scale, ascending and descending.

### D Major Scale

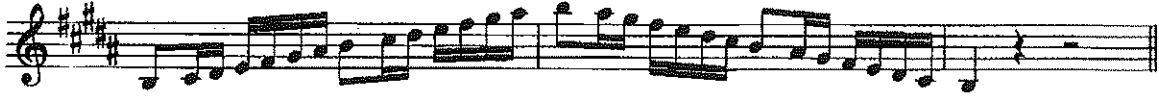
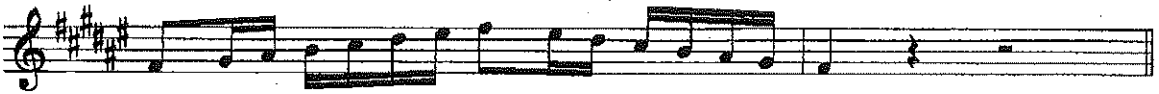
Single staff of musical notation for the D Major Scale, ascending and descending.

### A Major Scale

Single staff of musical notation for the A Major Scale, ascending and descending.

### E Major Scale

Single staff of musical notation for the E Major Scale, ascending and descending.

**B Major Scale****Cb Major Scale****F# Major Scale****Gb major Scale****C# Major Scale****Db Major Scale****Ab Major Scale****Eb Major Scale**

**Bb Major Scale**



**F Major Scale**



**Missouri ASB Melodic Minor Scales**

**A Melodic Minor**



**E Melodic Minor**



**B Melodic Minor**



**F# Melodic Minor**



**C# Melodic Minor**



**G# Melodic Minor**



**Ab Melodic Minor**



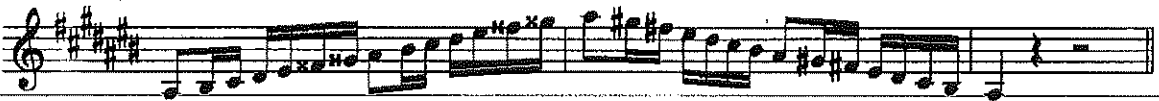
**D# Melodic Minor**



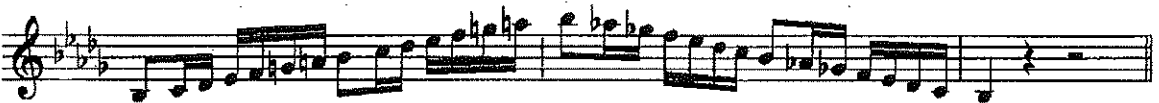
**Eb Melodic Minor**



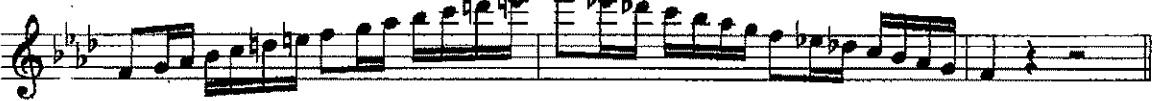
**A# Melodic Minor**



**Bb Melodic Minor**



**F Melodic Minor**



**C Melodic Minor**



**G Melodic Minor**



**D Melodic Minor**



# D Minor

HEINZE

*Alto Sax*

Andante

This page of musical notation consists of 12 staves of music, all in G minor (one flat). The music is written in a single melodic line with various dynamics and articulations. The first staff begins with a forte (*f*) dynamic and a dotted line above the first measure. The second staff continues the melodic line. The third staff features a piano (*p*) dynamic. The fourth staff includes a *trapp* marking above the first measure. The fifth staff has a piano (*p*) dynamic. The sixth staff is marked *resu.* (ritardando). The seventh staff begins with a forte (*f*) dynamic. The eighth staff has a piano (*p*) dynamic. The ninth staff is marked *ff* (fortissimo). The tenth staff continues with a piano (*p*) dynamic. The eleventh staff has a piano (*p*) dynamic. The twelfth staff concludes the page with a piano (*p*) dynamic and a final cadence.



86. *T*  
 Count: 1, 2.      1, 2.      1, 2.      1, 2. 1, 2.      1, 2.

1, 2.    1, 2.    1, 2.    1, 2.

G major.

No 15.

B minor.

No 18.

D $\flat$  major.

No 6.

B $\flat$  minor.

10629-103

78